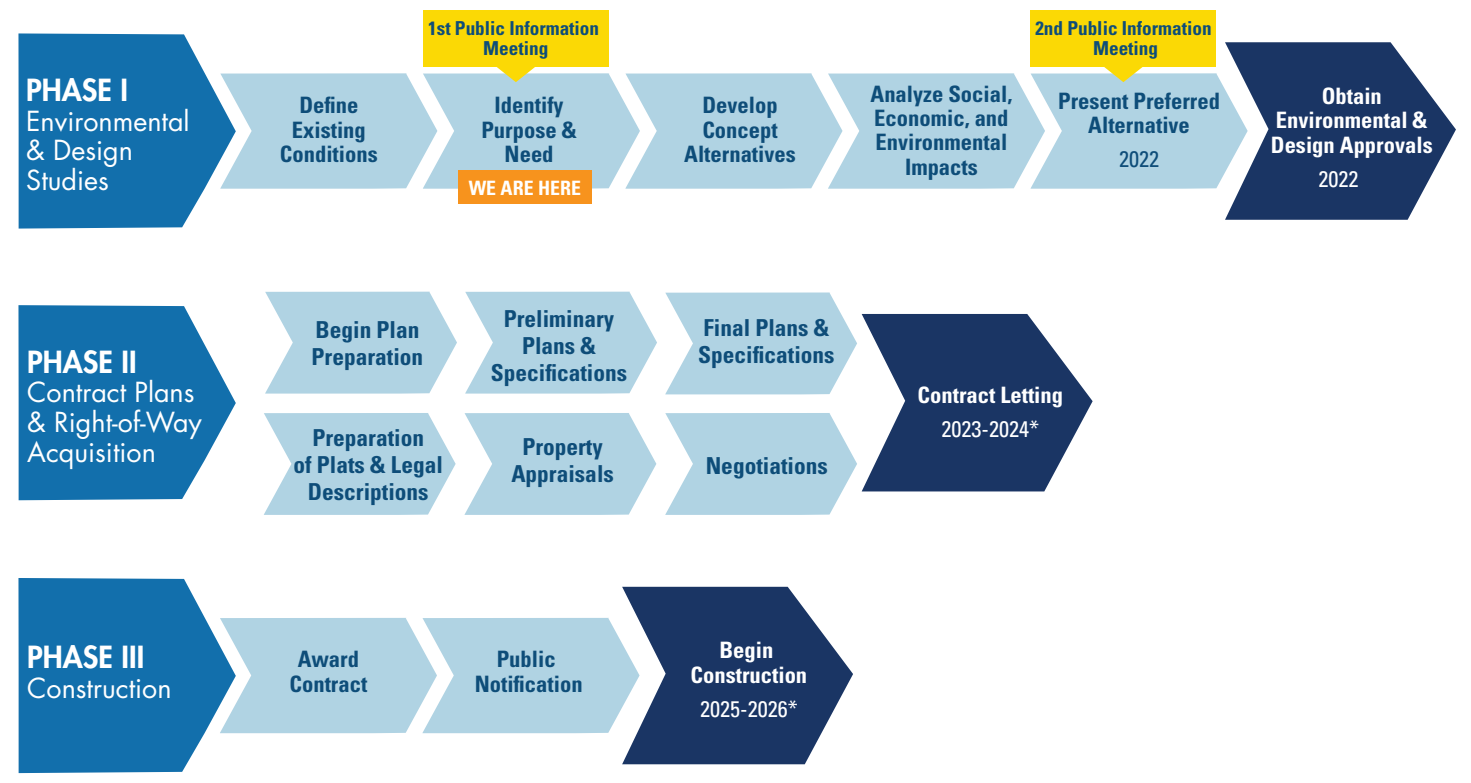


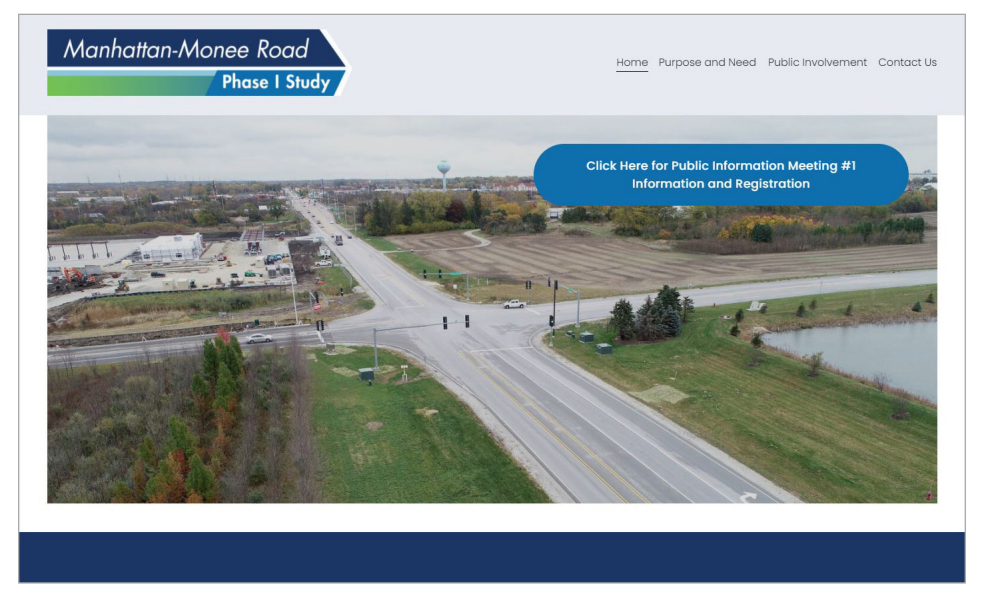
**Project Schedule**



**Questions, Comments and Information**

Your comments are valuable to us. Written comments may be submitted during the Public Information Meeting, mailed to the address below, or submitted via the project website by April 21, 2021. Any questions or comments regarding the study should be directed to:

**Christina Kupkowski, P.E.**  
Project Manager  
Will County Division of Transportation  
16841 W. Laraway Road  
Joliet, IL 60433  
(815) 727-8476  
ckupkowski@willcountyillinois.com



Find us online at [manhattan-monee-study.com](http://manhattan-monee-study.com)



**Online Webinar**  
Tuesday, March 30, 2021  
7:00 P.M.  
Register through the project website:  
[www.manhattan-monee-study.com](http://www.manhattan-monee-study.com)

**In-person Meeting**  
Wednesday, April 7, 2021  
5:00 P.M. to 7:00 P.M.  
Monee Village Hall  
5130 W Court Street  
Monee IL, 60449

**Purpose of Meeting**

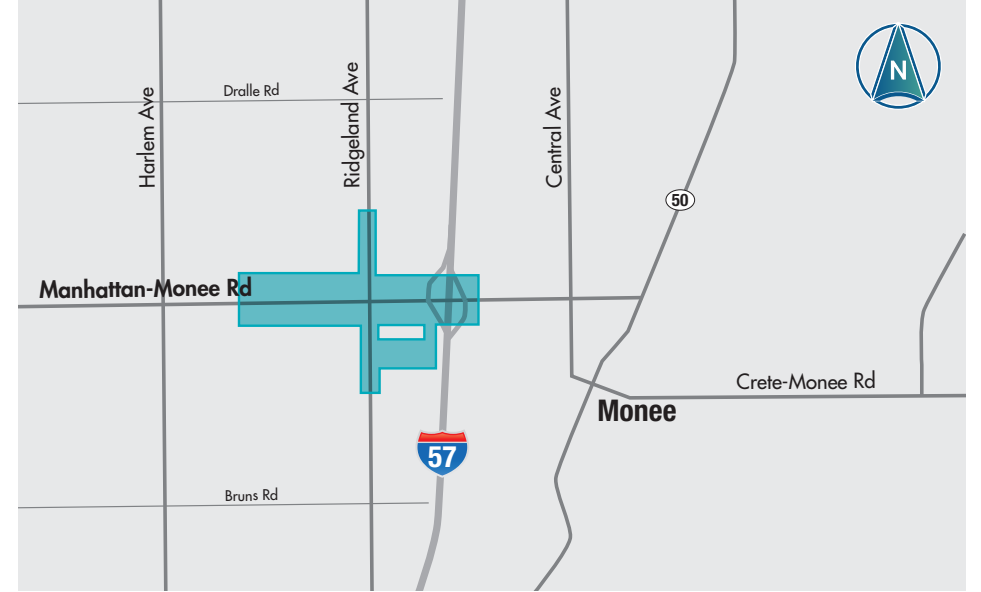
- Learn about the planning process, schedule, and public participation opportunities
- Provide input on transportation safety and operation within the study area
- Talk with the project team and ask questions

No proposed concepts will be shared along Manhattan-Monee Road.

**Welcome**

The Will County Division of Transportation and the Village of Monee welcome you to the first Public Information Meeting regarding the Preliminary Engineering Study for the Manhattan Monee Road corridor improvement project. The meeting is conducted in an open house format. We invite you to inspect the exhibits on display, talk with the study team members and provide your verbal and written input.

**Project Location**



**Need:**

- Existing traffic volumes have rapidly outgrown the existing roadway facilities. High travel delays are experienced, requiring daily manual traffic control during peak times throughout the year for both peak hours at four intersections along Manhattan-Monee Road.
- There is anticipated continued development and traffic growth along the corridor.
- There has been an increase in crashes at the Manhattan-Monee Road and Ridgeland Avenue intersection and along the corridor with the recent traffic growth.

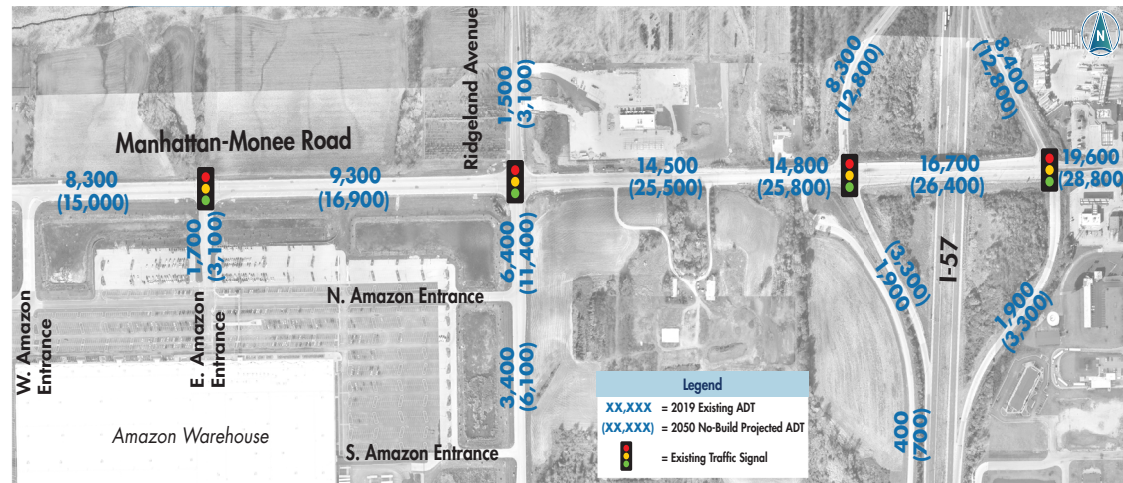


**Purpose:**

- Improve the safety and operation at the Manhattan-Monee/Ridgeland Avenue Intersection.
- Improve the safety and operation of the Manhattan-Monee corridor as identified in the Will Connects 2040 Plan in conjunction with other WCDOT corridor studies to the west and the Village improvements to the east.



**Existing and 2050 No-Build Average Daily Traffic**



**I-57 Interchange Observations**



**Manhattan-Monee Road Phase I Study Corridor Observations**

